

# S-5!<sup>®</sup>

## The Right Way!



COLORGARD<sup>®</sup> Snow Retention

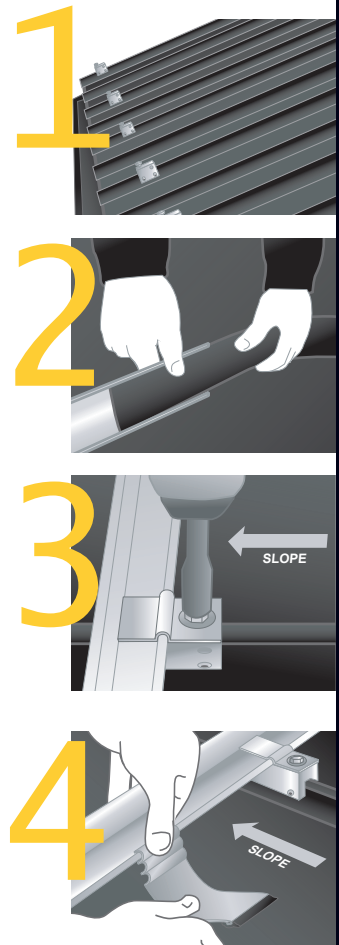
### Why ColorGard<sup>®</sup>?

The sudden and unexpected release of snow from the roof can be dramatic, posing a serious threat to property and passers-by. ColorGard<sup>®</sup> dramatically reduces the risks associated with rooftop avalanches and maintains the clean colorful appearance of the roof with perfect color and finish matching, which lasts as long as the roof itself! ColorGard<sup>®</sup> is the only snow retention system designed and engineered on a site-specific basis; guaranteed to perform, to not damage the roof or finish, and to exactly match the roof color—for the entire life of the roof\*.

Today's premium Kynar 500<sup>®</sup> and Hylar 5000<sup>®</sup> (PVDF) paint systems used on metal panels are "coil-coated" and oven-cured. This is the only finish application method that can be warranted against color fade for 30 years or longer. Nothing can equal it! So, why settle for less in a snow guard system? While some dyes, powder-coats and air-dried color application methods may initially simulate a perfect match, the color soon begins to fade and becomes increasingly mismatched with a few years of age. By utilizing a strip of the actual roof material, ColorGard<sup>®</sup> perfectly matches the roof—forever!

ColorGard<sup>®</sup> is mechanically attached with patented S-5!<sup>®</sup> clamps. S-5!<sup>®</sup> is the trusted name in metal rooftop attachment technology worldwide. S-5!<sup>®</sup> patented, round-point setscrews grip the seam securely without penetration and without damage to the panel's protective finishes. The clamps are precision-machined from aircraft quality, high tensile aluminum—not cast or plastic. All related hardware is non-ferrous stainless steel for lasting performance.

- Can be warranted for the life of the roof.
- Unsurpassed holding strength.
- Perfect color-match.
- Easy to install.
- Inexpensive.



\* See Optional Limited Lifetime Warranty information at the S-5!<sup>®</sup> website ([www.S-5.com](http://www.S-5.com)).

Attach almost **anything** to standing seam metal roofs without piercing the panel!

888-825-3432

[www.S-5.com](http://www.S-5.com)

## COLORGARD<sup>®</sup>

### Can ColorGard<sup>®</sup> be Retrofitted to An Existing Roof?

Yes, ColorGard<sup>®</sup> can be easily retrofitted to existing roofs, or incorporated into new construction design. ColorGard<sup>®</sup> can be installed any time of year.

### Is Design Assistance Available For ColorGard<sup>®</sup>?

Yes! It is critical to design a solution that takes into account the effects of gravity on a snow-covered roof. The tested holding strength of ColorGard<sup>®</sup> must be checked and proven against the actual “in-service” gravity loads of the roof. This important step in application engineering should not be omitted for any snow retention product.

Consult with your distributor or use our online calculator at [www.S-5.com](http://www.S-5.com) to help quickly and easily design each job. The calculator will help you to “tailor” the ColorGard<sup>®</sup> system on a project-specific basis, allowing for all the variables involved—and even provide a printout of the calculations and a material requirement list.

### How Easy is it to Install?

Once designed, ColorGard<sup>®</sup> is easy to install and requires only tools that are common to the trade.

Because S-5!<sup>®</sup> ColorGard<sup>®</sup> uses mechanical attachment rather than adhesives, installation can be done any time of year, with no cleaning, no priming, no cure times, and no callbacks!

### What About Cost?

ColorGard<sup>®</sup> is the best buy on the market! This is the best news of all! ColorGard<sup>®</sup> has greater holding strength, better aesthetics, longer service life, and lower installed cost than any other engineered system on the market. Pound-for-pound of holding strength, ColorGard<sup>®</sup> is a better buy than individual cleats or glued units.

**S-5!<sup>®</sup> Warning! Please use this product responsibly!**

*Products are protected by multiple U.S. and foreign patents. Visit the website at [www.S-5.com](http://www.S-5.com) for complete information on patents and trademarks. For maximum holding strength, setscrews should be tensioned and re-tensioned as the seam material compresses. Clamp setscrew tension should be verified using a calibrated torque wrench between 160 and 180 inch pounds when used on 22ga steel, and between 130 and 150 inch pounds for all other metals and thinner gauges of steel. Consult the S-5!<sup>®</sup> website at [www.S-5.com](http://www.S-5.com) for published data regarding holding strength.*

Copyright 2009, Metal Roof Innovations, Ltd. S-5!<sup>®</sup> products are patented by Metal Roof Innovations, Ltd.  
version 101509

### Why is S-5!<sup>®</sup> the Best Choice?

The premium finishes used on today’s metal roof products are fluorocarbons—paint resins that are similar in chemical composition to “Teflon,” the popular non-stick coating. The benefits of this type of paint are related to its nonstick characteristics. Chemical bonds like tapes, glues and adhesives, therefore, provide only temporary and unreliable solutions. Other mechanical alternatives that involve penetrating the roof or galling the surface result in leakage, corrosion, and voided warranties. Thanks to our patented round-tip setscrews, S-5!<sup>®</sup> clamps do not pierce metal paneling, thereby protecting roof coatings and weather-tightness warranties.



Distributed by